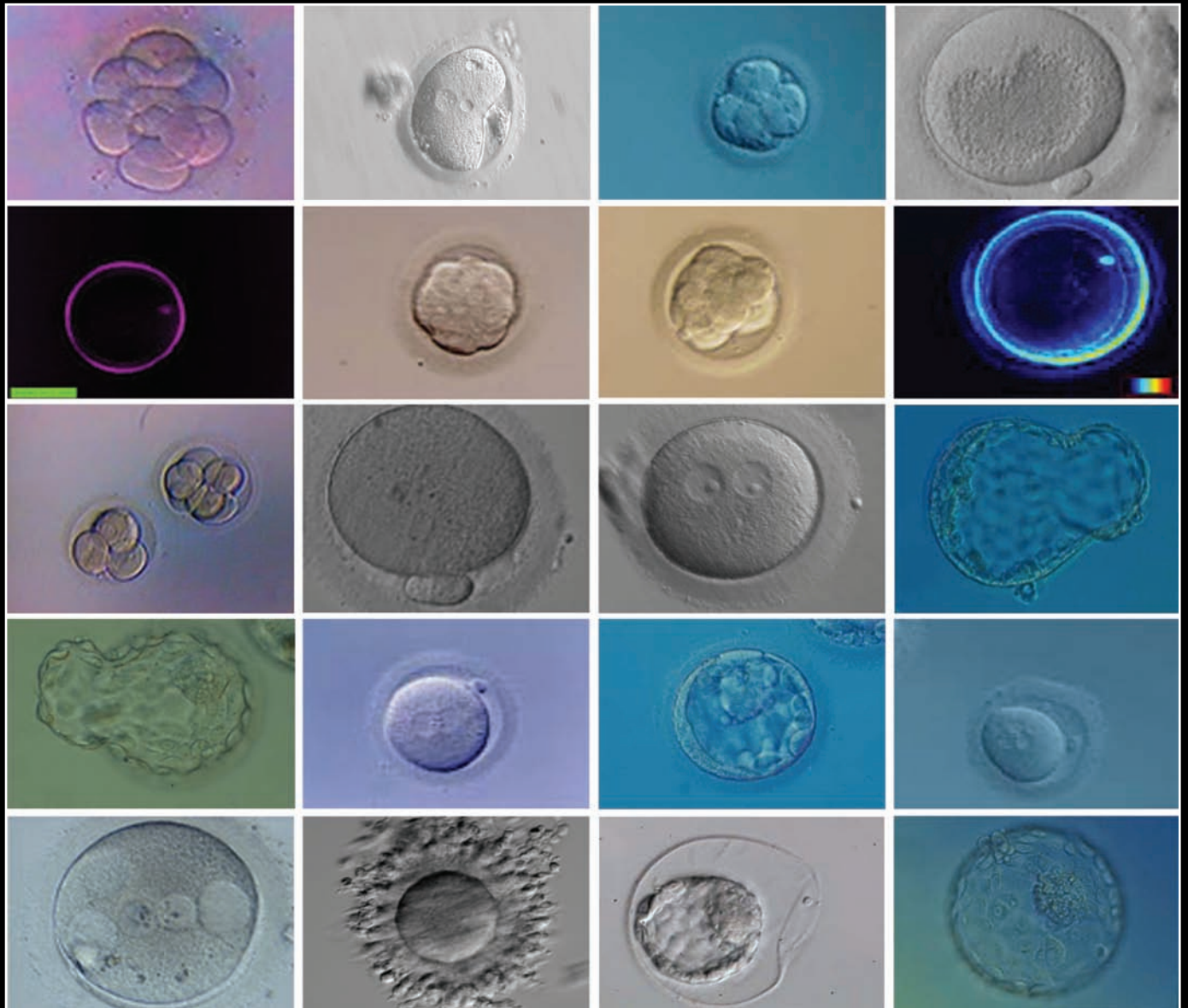


Atlas of Human Embryology: from Oocytes to Preimplantation Embryos

M. Cristina Magli, Gayle M. Jones, Kersti Lundin, Etienne Van den Abbeel
and The Special Interest Group on Embryology



M.C. Magli, G.M. Jones, K. Lundin and E. Van den Abbeel

Atlas of Human Embryology

Human Reproduction Vol. 27, Suppl. 1, 2012

OXFORD
UNIVERSITY PRESS

Human Reproduction
Volume 27 Supplement 1 August 2012
Oxford University Press

 **eshre**
SCIENCE MOVING
PEOPLE
MOVING SCIENCE

ATLAS OF HUMAN EMBRYOLOGY

**From Oocytes To
Preimplantation Embryos**

Edited by

M. Cristina Magli

Gayle M. Jones

Kersti Lundin

Etienne Van den Abbeel

An ESHRE SIG Embryology Initiative

For Loredana Papale, in memorium. Now her passion for Embryology and her strong belief in Embryologists taking a leading role will last forever

Bibliography for Figures

- Arroyo Cardona G**, Institut Universitari Dexeus, 7508028 Barcelona, Spain: Figures 125, 242, 302
- Balaban B**, American Hospital, Assisted Reproduction Unit, 34365 Istanbul, Turkey: Figures 32, 48-50, 69, 73, 94, 134, 197, 203-204, 207-208
- Barriere P**, CHU Nantes, 44093 Nantes Cedex 01, France: Figures 311, 347
- Biogenesi IVF Lab**, Biogenesi, Istituti Clinici Zucchi, 20900 Monza, Italy: Figure 52
- Castelletti E**, IIRM, 6924 Sorengo, Switzerland: Figures 85-87, 90-92, 103, 109, 115, 120-121, 126, 136-137, 143-146, 148, 150, 158, 162, 164, 167-168, 170-171, 173, 190-192, 196
- Ciray NH**, Bahceci Fulya IVF Center Hakki Yeten, 34439 Istanbul, Turkey: Figures 21-22, 54-56, 58, 60, 67-68
- Debrock S**, Leuven University Fertility Center, UZ Leuven Campus Gasthuisberg, B-3000 Leuven, Belgium: Figures 216-217, 232, 234, 236-238, 248, 251-252, 255, 259-260, 262, 283, 288, 291, 295
- De Pablo Franco JL**, Hospital Quirón Bilbao, 48014 Bilbao, Spain: Figures 95, 163, 185, 200, 209, 213-215, 266, 269, 272, 294
- De Santis L**, IVF Unit, Dept Ob/Gyn, H San Raffaele, 20132 Milano, Italy: Figures 20, 81
- Ebner T**, Landes-Frauen- und Kinderklinik Kinderwunsch Zentrum, A4020 Linz, Austria: Figures 10, 12, 25, 31, 42-44, 46, 63, 66, 74-76, 78-79, 174, 184, 304, 316-317, 344, 356
- Ferrer Robles E**, CREA, Centro Médico de Reproducción Asistida, 46003 Valencia, Spain: Figures 220, 241, 263, 275, 278
- Fiorentino A**, Department of Obstetrical, Gynecological and Urological Science and Reproductive Medicine, University of Naples Federico II, 80131 Napoli, Italy: Figures 17, 30, 35, 189, 193-194, 198, 201-202, 256
- Gago García M**, Clinica Quirúrgica Tambre C, 828002 Madrid, Spain: Figures 122, 296, 298, 300, 336, 373
- Gardner DK**, University of Melbourne, 3010 Parkville, Victoria, Australia: Figures 309, 319, 324, 342
- Gómez Sánchez E**, Tahe Reproducción, 30007 Murcia, Spain: Figures 277, 297
- Greuner M**, GMP Happel/Giebel/Russu/Otte, 66113 Saarbrücken, Germany: Figures 11, 88, 93, 104, 110, 159, 161, 172, 188, 199, 205, 270
- Guerrero Villena J**, Instituto Bernabeu, 03016 Alicante, Spain: Figures 282, 286, 289
- Hardarson T**, Fertilitetscentrum Carlanderska Hospital, 40229 Göteborg, Sweden: Figures 321, 346, 353-354, 363, 376, 389
- Herreros Cuesta J**, Hospital Universitario Madrid-Montepríncipe; Unidad de Reproducción, 28660 Boadilla del Monte (Madrid), Spain: Figures 226, 249, 254, 258, 267, 274, 280, 290
- Huguet Gutiérrez E**, IVI Madrid, 28023 Madrid; Spain: Figures 62, 97-98, 141-142, 187, 221, 250, 264, 276, 301
- Iglesias Núñez M**, Hospital Quiron Madrid, 28223 Pozuelo de Alarcón, Spain: Figure 299
- Jones GM**, Centre for Human Reproduction, Genesis Athens Clinic, 15232 Halandri, Greece; GMJ A.R.T. Solutions, 3051 North Melbourne, Victoria, Australia; Monash Immunology & Stem Cell Laboratories, 3800 Monash University, Clayton, Victoria, Australia: Figures 306, 308, 313-314, 320, 322, 325-326, 328-334, 338-341, 343, 348-349, 355, 357-361, 364-368, 370-372, 377-381, 383-384, 386-388, 390-393, 395-397
- Lemmen J**, Copenhagen University Hospital Rigshospitalet, 2100 Copenhagen O, Denmark: Figures 224, 228, 231, 239-240, 243-244, 247, 285
- Mandelbaum J, de Larrouzière V**, Department of Reproductive Biology, Hôpital Tenon, 75020 Paris, France: Figures 5, 7-9
- Martín Mateos J**, FIV Recoletos Valladolid, 47004 Valladolid, Spain: Figure 225
- Mercader A**, IVI-Valencia, 46015 Valencia, Spain: Figures 337, 345, 362, 394
- Moragas Solanes M**, Hospital Quirón Barcelona; 08023 Barcelona, Spain: Figures 210, 222, 245, 253, 279
- Montag M**, Department of Gynaecological Endocrinology and Fertility Disorders, University of Heidelberg, 69115 Heidelberg, Germany: Figures 27, 89, 96, 101, 108, 131, 135, 138, 149, 154, 156-157, 177, 179, 186
- Música A**, IBILAB, 07011 Palma de Mallorca, Islas Baleares, Spain: Figures 246, 271
- Nogueira D**, IFREARES - Laboratoire de Biologie de la Reproduction, Clinique Saint Jean Languedo, 31400 Toulouse, France: Figures 2, 3, 4
- Papale ML**, CRA Centro Riproduzione Assistita, 595128 Catania, Italy: Figures 99-100, 102, 105-107, 112-114, 117-119, 123-124, 127-130, 132-133, 139-140, 147, 151-153, 155, 160, 165-166, 169, 175-176, 178, 180-183, 195
- Pérez Bermejo G**, Hospital Universitario Madrid-Montepríncipe, Unidad de Reproducción, 28660 Boadilla del Monte (Madrid), Spain: Figures 212, 223, 268, 273, 284, 293
- Pons Gatell MC**, Centro Medico Teknon, Unitat de Reproducció Assistida, 08022 Barcelona, Spain: Figures 218, 292
- Prados FJ**, Unidad de Reproducción, Hospital Universitario Madrid-Montepríncipe, 28660 Boadilla del Monte, Spain: Figures 70, 219, 227, 229, 230, 233, 235, 257, 261, 265, 281, 287,
- Rienzi LF**, GENERA Centre for Reproductive Medicine, Clinica Valle Giulia, 00197 Roma, Italy: Figures 1, 14-16, 18-19, 23-24, 28-29, 33, 36-41, 45, 47, 51, 53, 57, 59, 61, 65, 71-72, 80, 82-84, 206, 312, 335
- Restelli L**, UO Sterilità di Coppia, Fondazione Ospedale Maggiore Policlinico Infertility Unit, 620122 Milano, Italy: Figures 6, 13, 34, 64
- Solvás Martínez I**, Centro Medico Teknon, Unitat de Reproducció Assistida, 08022 Barcelona, Spain: Figure 211
- Van Landuyt L**, CRG UZ Brussel ILaarbeeklaan, 1011090 Jette-Brussels, Belgium: Figures 303, 305, 307, 310, 315, 318, 327, 350-352, 369, 374-375, 382, 385
- Yoon SC**, Clinica Santa Maria, 70124 Bari, Italy: Figures 26, 77